

Introduction

The Hygiene Monitor software has been optimised for Microsoft Windows XP operating system, however it can also be run on Vista.

Do NOT plug the smart card reader into the computer until the software has been fully installed.

Important – if installing the software on the Vista operating system, ensure that it is installed with Administrator rights (If you are unsure take advice from your company IT department about the configuration of your machine and how to do this).

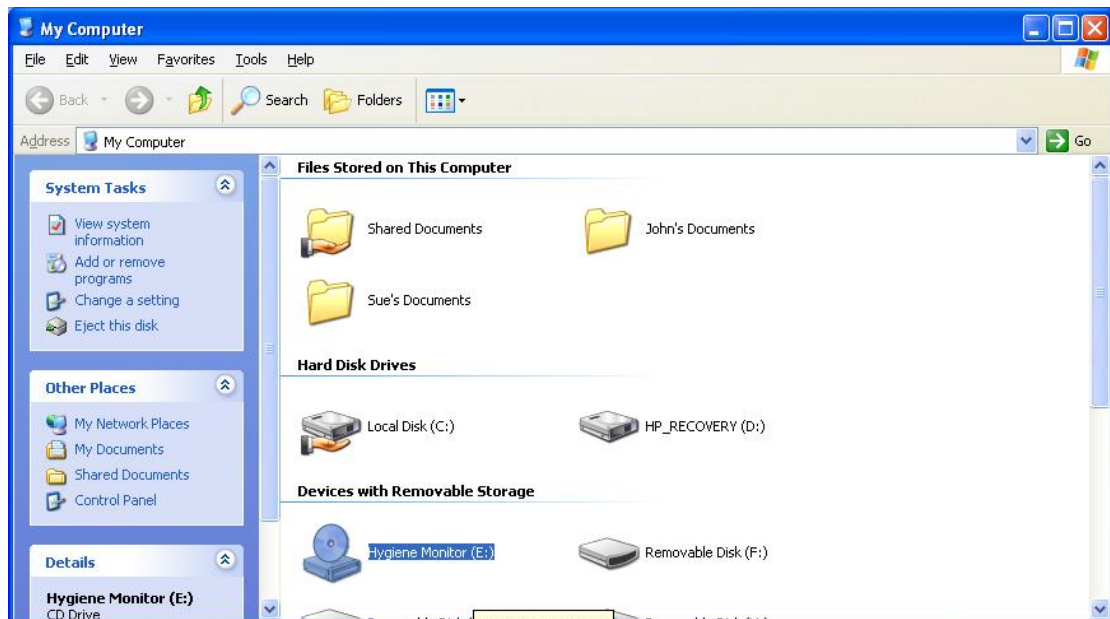
These instructions show the sequence of installation from a CD. Refer to Appendix 1 if you have downloaded or been issued a “ZIP” file.

1. Insert the CD into the CD drive.

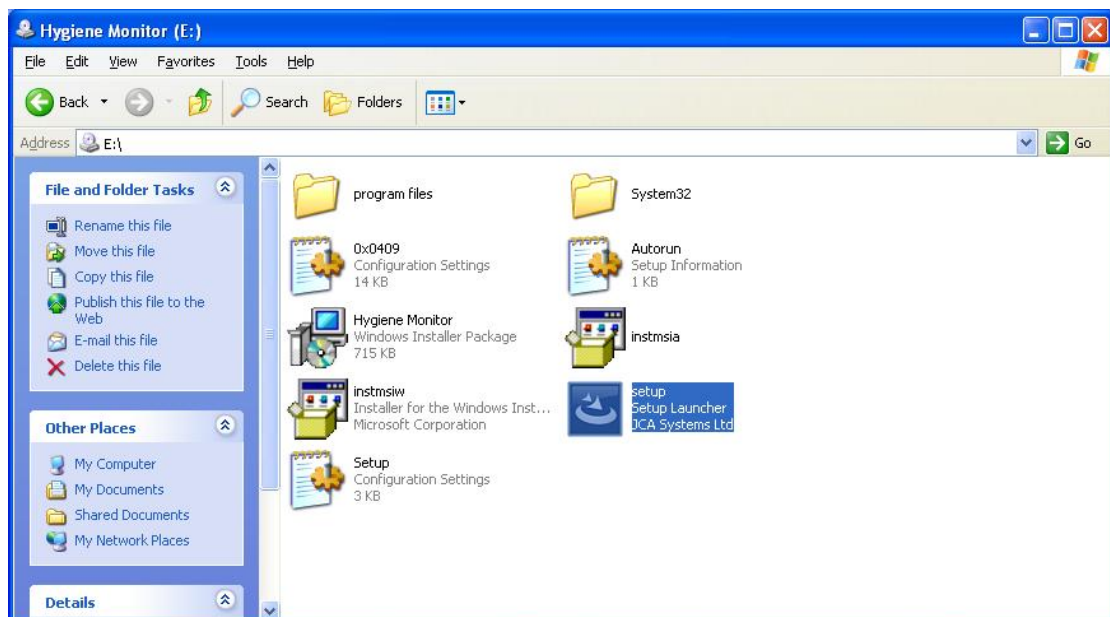
The software should start automatically – on Windows XP it will normally go straight to step 2, whereas on Vista you may need to “double click” **Run setup.exe** as shown in the picture below:



If the CD does not automatically start double click the **My Computer** (XP) or **Computer** (Vista) icon and then double click the **CD drive** to open its contents:

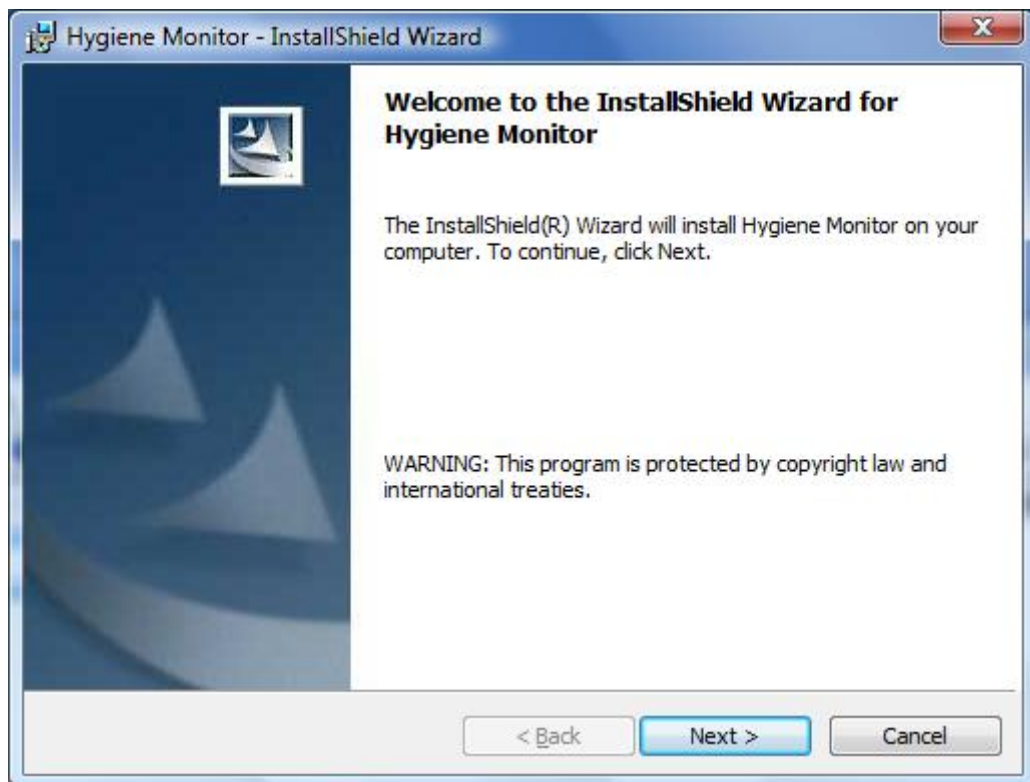


Then double click the file **setup** (or **Autorun**) to start the installation :

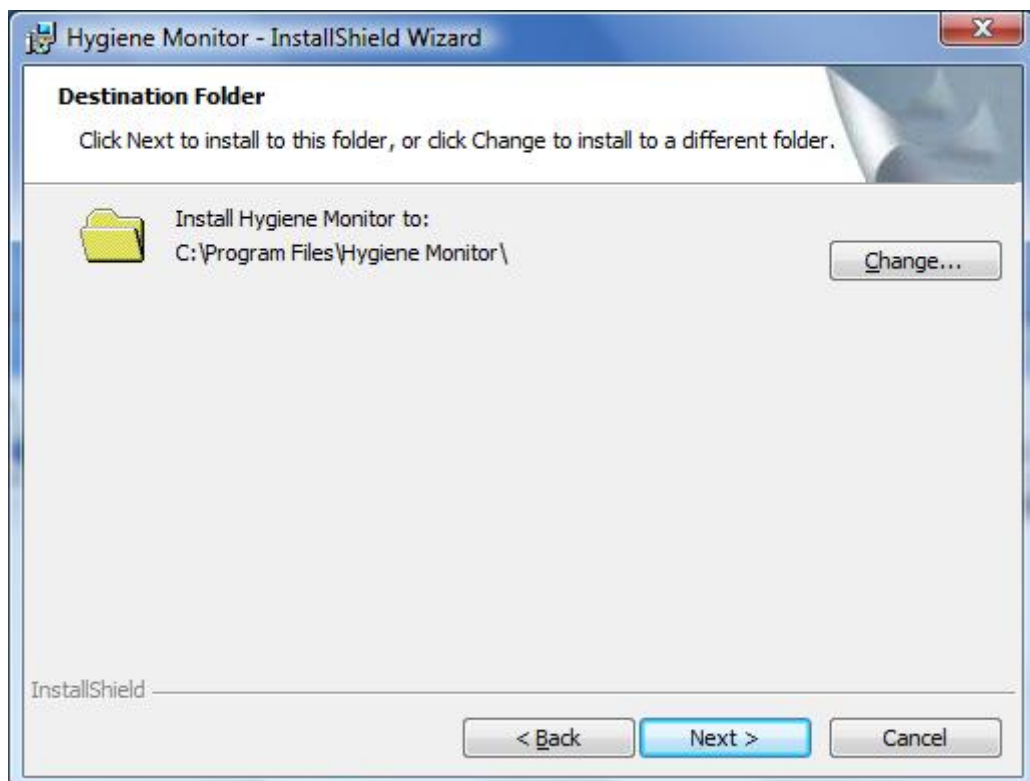


2. Install the software

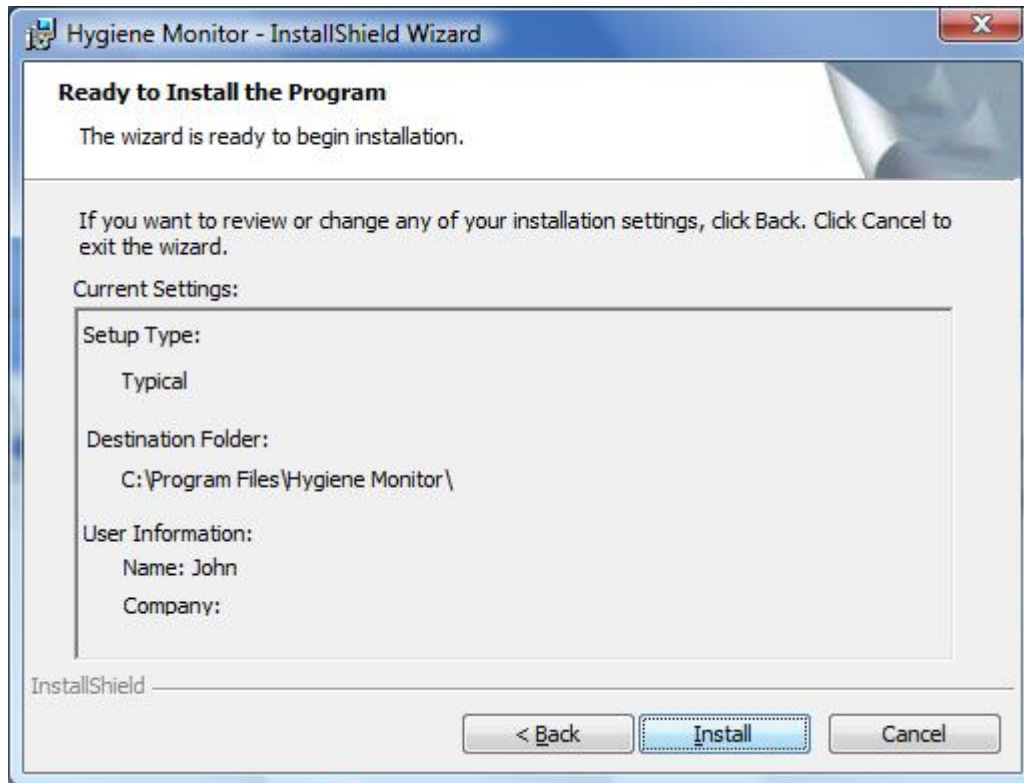
- follow the on screen instructions:



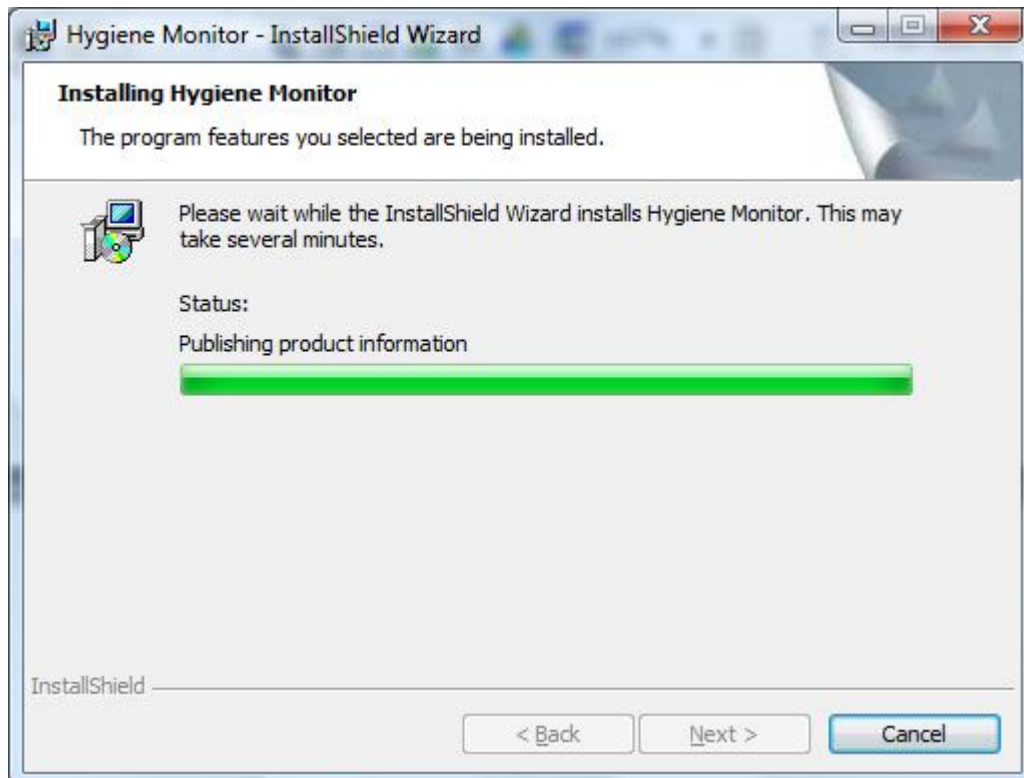
Click **Next >**



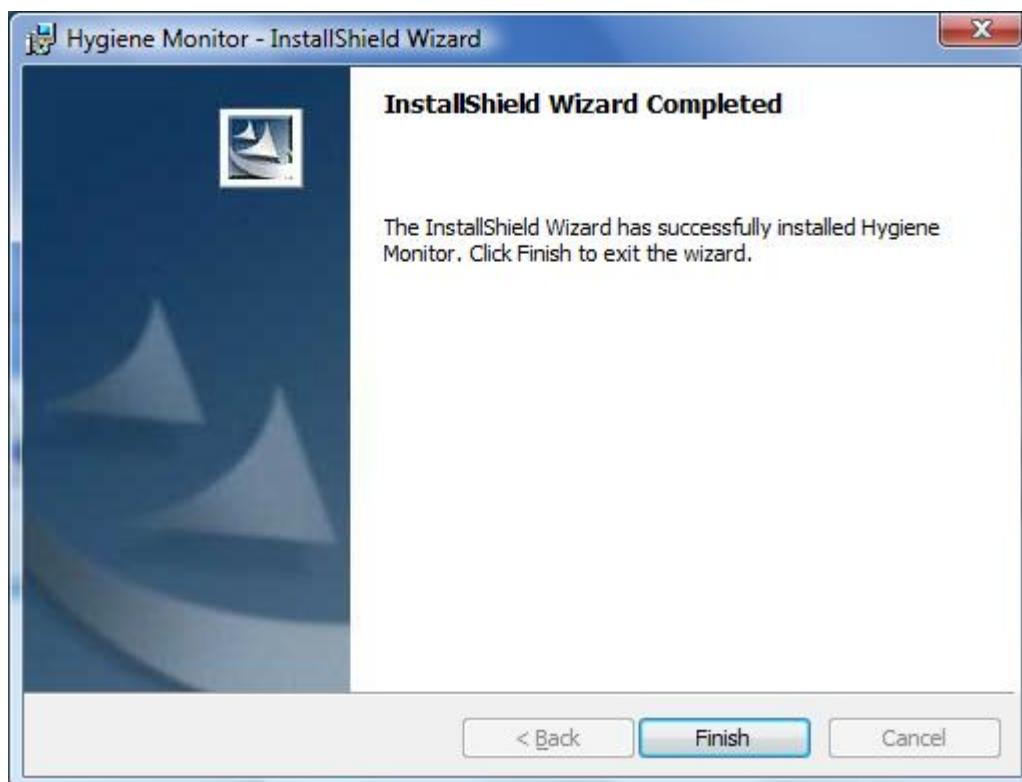
Click **Change** if you need to install the software somewhere different otherwise click **Next >**



Click **Install**



Wait until this stage has completed – this could take several minutes



At this point the main Hygiene Monitor software has been installed.

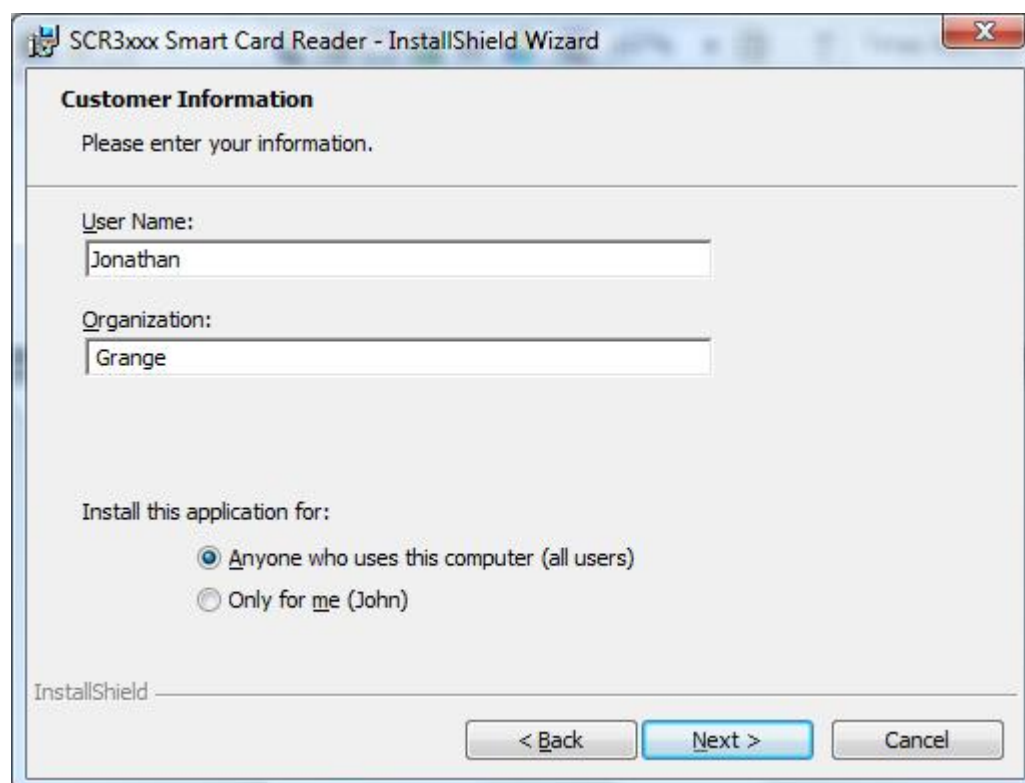
Click **Finish** to start installing the card reader driver software



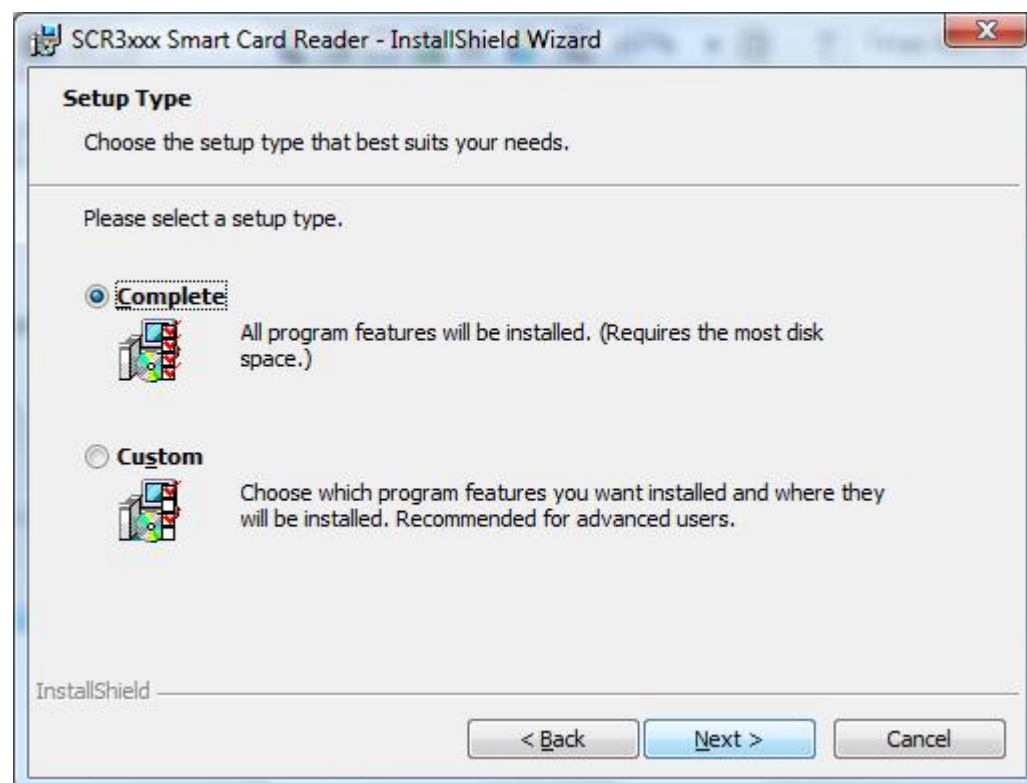
Click **Next >**



Select "***I accept***" and then click ***Next >***

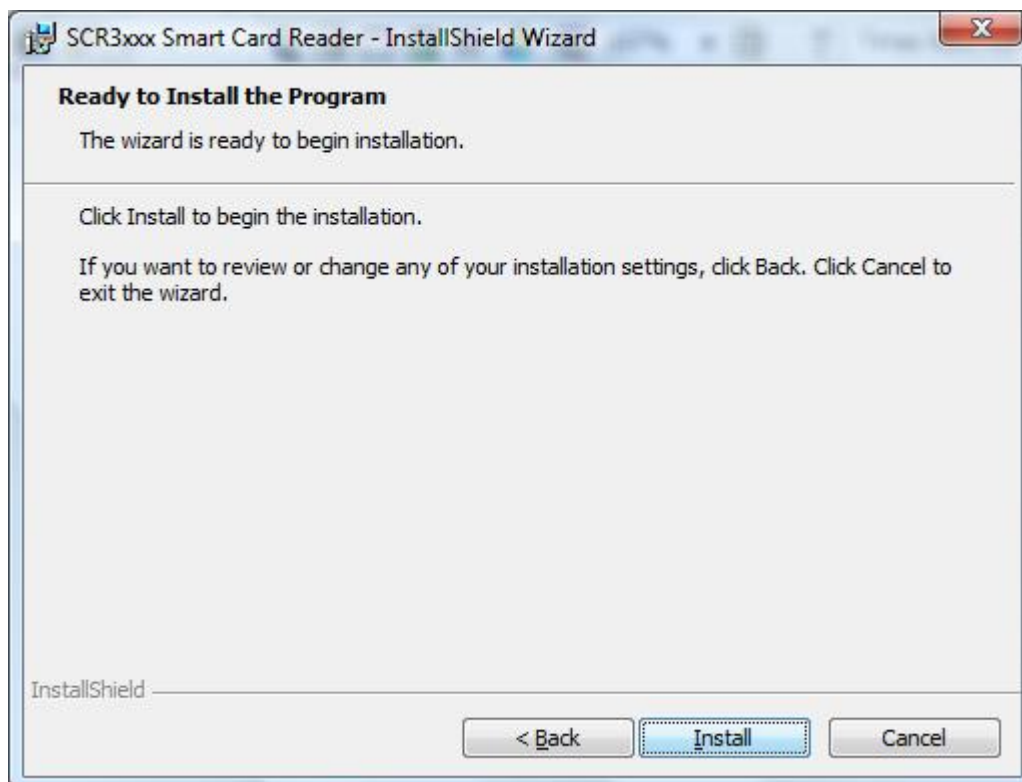


Enter your name and company, select “**Anyone.....**” and then click **Next >**

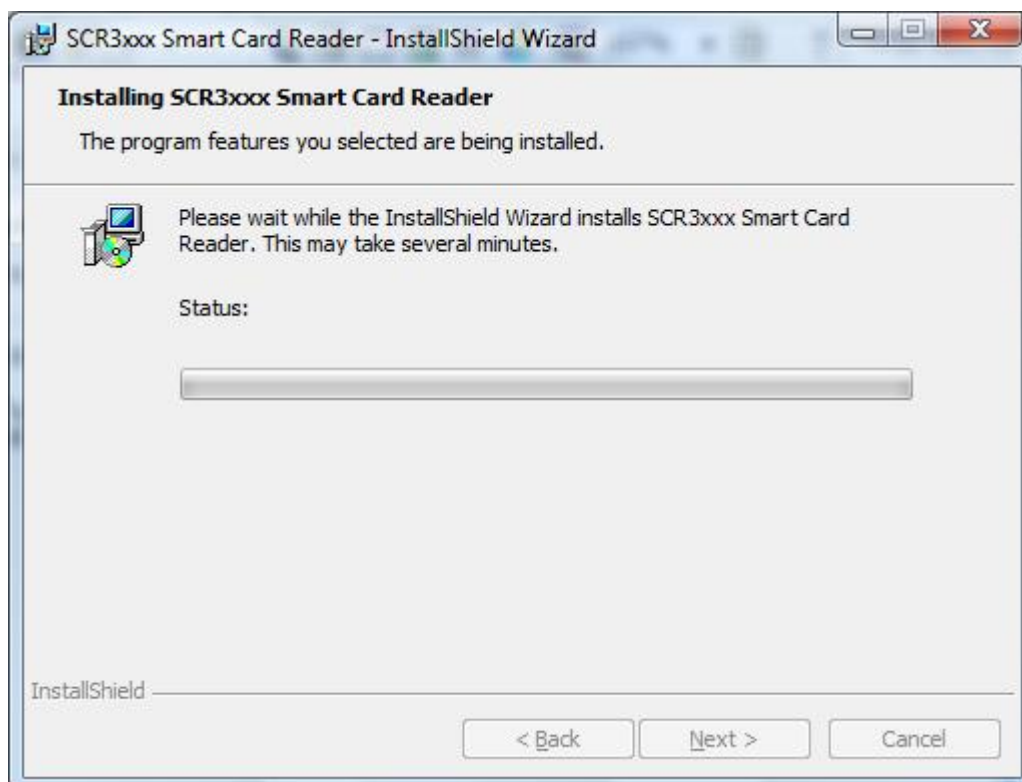


Select “**Complete**” and then click **Next >**

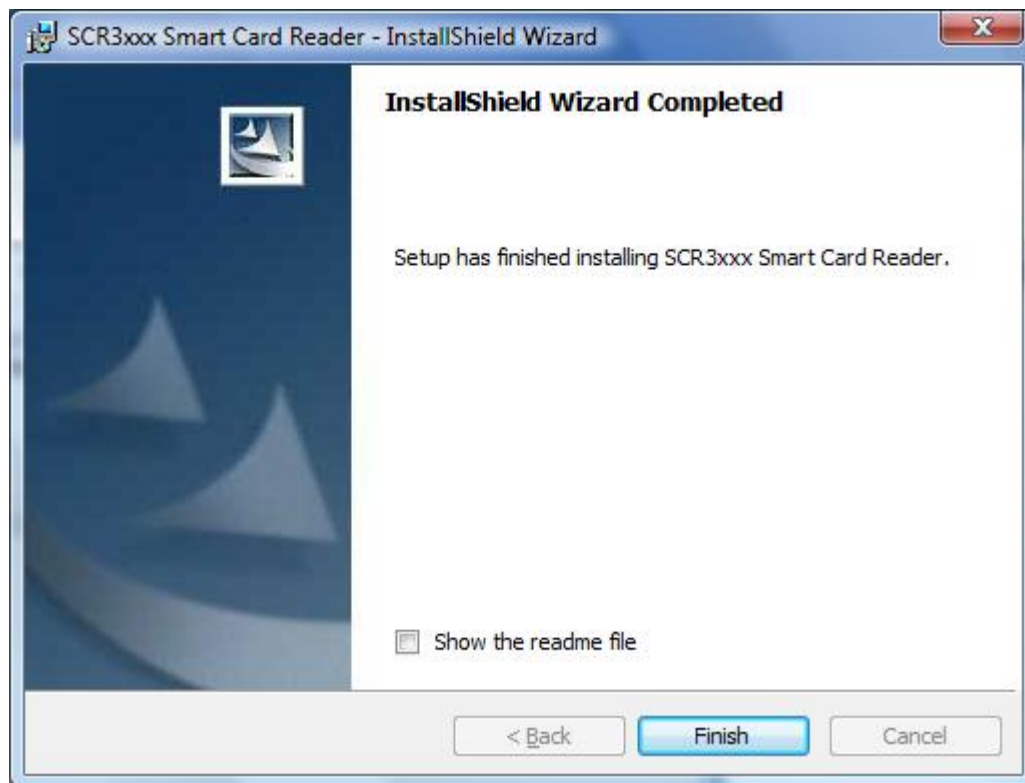
If at this stage the options shown are “**Modify**”, “**Repair**” and “**Remove**” the smart card reader driver has already been installed. Select “**Repair**” and then click **Next >**



Click **Install** >



Wait until this stage has finished loading the software – this could take several minutes.



Click **Finish**

The installation is now complete. You may be asked to Restart the computer – if so close any other programmes that are open and click **Yes**

Once the computer has been restarted plug the SCR335 card reader into a convenient USB slot on the computer. After a couple of minutes the computer should indicate that the card reader is ready to use.

You may then start the Hygiene Monitor application through the Start button menus or the shortcut on the desktop :



Appendix 1 : Installation files supplied in a ZIP file

- (i) Save the ZIP file to a temporary folder (e.g. C:\temp)
- (ii) Open the selected temporary folder using the the **My Computer** (XP) or **Computer** (Vista) icon and then browse to the selected temporary folder
- (iii) Then double click the file **setup** (or **Autorun**) to start the installation :

